

Texas ★ Knights

OFFICIAL BULLETIN OF
THE TEXAS
CHESS ASSOCIATION

TEXAS CHESS CLUBS

VOLUME 26, NO. 1
AUTUMN 1984

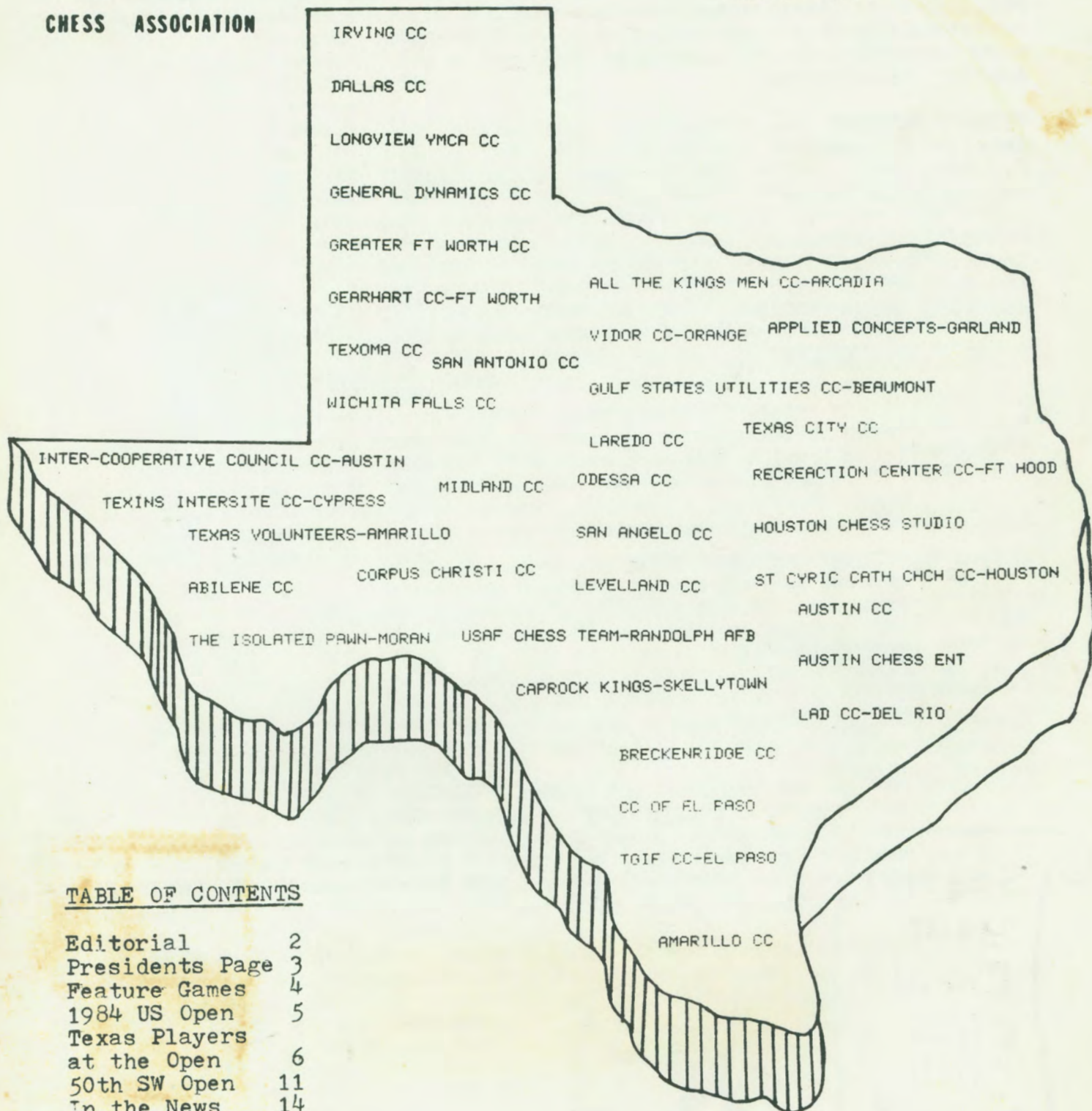


TABLE OF CONTENTS

Editorial	2
Presidents Page	3
Feature Games	4
1984 US Open	5
Texas Players at the Open	6
50th SW Open	11
In the News	14

TEXAS KNIGHTS EDITOR

Robert C. Green

LAYOUT DIRECTOR

Ellie Devon Green

TEXAS CHESS ASSOCIATION OFFICERS

PRESIDENT

Patrick C. Long
P.O. Box 2307
Austin, Texas 78768

VICE-PRESIDENT

Robert C. Green
P.O. Box 278
Moran, Texas 76464

SECRETARY-TREASURER

Lorenzo Gaskill
109 E. 23rd Street
Houston, Texas 77008

TEXAS POSTAL CHESS

DIRECTOR

Bruce Baker
4321 Pease
Houston, Texas 77023

USCF OFFICER

SENIOR REGIONAL VICE-PRESIDENT

Art Riley
7223 Brookside
San Antonio, Texas 78209

USCF DELEGATES

Patrick C. Long
Lorenzo Gaskill
Robert C. Green

TCA PATRON LIST

1. Amarillo Chess Club
2. Lynne Babcock, Austin
3. Bruce Baker, Houston
4. Kendall Black, Grand Prairie
5. Duncan Campbell, Houston
6. Frank Carter, Houston
7. Charles Davis, Wichita Falls
8. Dusan Djuric, College Station
9. Mike Flewelling, Houston
10. Greater Ft. Worth Chess Club
11. Lorenzo Gaskill, Houston
12. 1984 U. S. Chess Organizers
13. Howard Hudspeth, Dallas
14. Joseph Kusmiss, El Paso
15. Patrick C. Long, Austin
16. William Lukowiak, Boston, MA
17. Dale McLemore, Austin
18. David Meier, El Paso
19. Robert Montgomery, Midland
20. Robert Nielsen, Corpus Christi
21. Billy Patteson, Houston
22. Vernon Rippy, Wichita Falls
23. Stanley Shanks, Midland
24. Jane Smith Witten, Dallas
25. Kenneth R. Smith, Dallas
26. Mevis R. Smith, Friendswood
27. Bill Snead, Amarillo
28. Blake Stevens, San Antonio
29. Walter Stapp, Crowell
30. J. C. Thompson, N. Billings, MT
31. Clinton Vernon, Houston
32. Steve Welborn, Vidor
33. Bill Wheeler, Corpus Christi

EDITORIAL

"WHEN I GET MY COPY OF TEXAS KNIGHTS I THROW IT AWAY IF I SEE ANY ALGEBRAIC NOTATION!" I HEARD THIS STATEMENT AT THE BUSINESS MEETING THIS YEAR. I FEEL SORRY FOR THOSE WHO HAVE THIS OPINION. OUR SPORT HAS A WEALTH OF LITERATURE AVAILABLE BUT THE VAST MAJORITY OF IT IS AVAILABLE ONLY TO THOSE WHO MASTER MORE THAN ONE CHESS LANGUAGE. NO, I AM NOT SAYING ALGEBRIAC IS THE ONLY NOTATION SYSTEM. I AM SAYING LEARN TO THINK IN ALL CHESS LANGUAGES (DESCRIPTIVE, ALGEBRIAC, LONG ALGEBRIAC, FIGURINE ALGEBRIAC, NUMERICAL, UDEMANN CODE, GERMAN ALGEBRIAC, RUSSIAN ALGEBRIAC ETC.) IT WILL OPEN UP A WHOLE NEW VISTA OF CHESS TO YOU. THIS EDITOR WILL PUBLISH GAMES IN WHATEVER FORM THEY ARRIVE. ROBERT GREEN.



PRESIDENT'S PAGE

With this issue we begin a new season of Texas Knights--the 26th Edition. We are happy to announce a new Editor-in-Chief, Mr. Robert Green of Moran, Texas. Robert was also elected to serve as our new Vice-President! Be sure to send your tournament announcements to Robert. (See his address on the inside front cover.) Also elected to serve second terms were Patrick C. Long as President and Lorenzo (Lee) Gaskill as Secretary-Treasurer.

At the 1984 Business Meeting held in conjunction with the 50th annual Southwest Open several matters were discussed and many awards were given. We honored Mr. J. C. Thompson as the Founder of both the Texas Chess Association and the Southwestern Open in 1935. Mr. Thompson received a plaque in honor of all the years he has supported Texas chess. Mr. Thompson remembers that the Swiss System was introduced into tournament play by George Koltanowski when he directed the 1942 Southwestern Open in Corpus Christi. (Not the 1943 Pennsylvania Championship as reported in Chess Competitors' Handbook.) The Swiss System really caught on after the 1947 U. S. Open held in Corpus, directed by Kolty and won by Isaac Kashdan. According to Mr. Thompson, the Swiss System and the Elo Rating System are the best things to happen for the development of interest in chess.

An award was given to Angie Gardner for Best Promoter of the Year and to the Greater Fort Worth Chess Club for the best Sponsor of the Year for producing the 1984 U.S. Open. Mike Moore presented an award to Bill Church for his contribution to chess in Texas over the past 12 years. Bill Church in turn presented George Koltanowski an Honorary Texan Award signed by our Governor Mark White. Kolty even had a story for this occasion!

On the business side there are several matters which the members need to know. First: dues have been increased by both the USCF and TCA. The USCF dues will be \$25 beginning January 1, 1985, for regular adult members; juniors, spouses and seniors will be \$12.00. For a summary of our dues increase to \$8 see page 14 of this issue. The USCF has also initiated what it calls the State Assistance Support Fund (Federal Funding!). Beginning in January it will take \$1 of every regular membership and 40¢ of junior memberships for the fund. In July, 1985, states will be able to make application for the funds if their program is approved. We will make application for an appropriate program.

The 1984 U. S. Open was a success for the organizers and for Texas Chess in general. 518 players competed for over \$20,000 in prizes. The Chief Tournament Director was Bill Lukowiak; his Chief Assistant TD's were John McGaughy and Patrick Long; the other assistant directors were James Little (TN), Robert Green, Robert Montgomery, John Chapman and Charles Davis. See pages 5-10 for a more complete tournament report, including games.

We hope that you enjoy this issue. If you like games we know you will. Please help Robert Green this year by sending your games and tournament results to him directly. Robert is eager and willing to be our editor, but he needs your help and cooperation.

SOUTHWEST OPEN 1984

Paul KURODA (2376) vs Joe BRADFORD (2540)

Annotation by Selby Anderson (A) and Jack Ligon (L)

1 c4 c6 2 Nf3 d5 3 b3 (L-After P-Q4 we have a Slav defense to the QG. Kuroda generally prefers flank openings) 3...Nf6 4 Bb2 (A-If white wants a double fianchetto he should play 4g3 now)4...Bg4 (L-Black develops his QB taking advantage of the fact that white does not have the move Q-N3 at his disposal)5 e3 e6 6 Be2 Nbd7 7 0-0 Bd6 8 Nc3 (A-a divergence from modern Reti treatment which steers for a hedgehog setup with d3, Nbd2 L-ECO considers 8 PQ3 followed by 9 QN-Q2 to be white's main plan. Of course, the N is more active on QB3 but the scope of the dark square B is diminished) 8...0-0 (A-Not 8...e5 9 cd helping white)9 Rc1 Re8 10 Nd4 (A-Actually a good move thematic in the Reti but Bradford's tricky reply must have thrown Kuroda off as he begins sliding downhill)10 Ne5! (L-Bradford prefers to keep the tension 10 BxB,11 QxB only helps white development)11 f3 (A-obviously not 11f4 Nd3! The safe approach is 11 d3 intending h3 with a solid but drawish game)11...Bh5 12 d3?(A-The weakening of e3 later proves decisive. Better is 13 cd ed 14 Nf5 or 13...cd 14 Ncb5 with active play. White's 'Hump' pawn structure here is reminiscent of a Taimanov system in the sicilian)12...dc 13 dc Ned7!(A-hoping for 14 Nc6? Qc7! L-An interesting retreat. Bradford forsees white's 14th and wants the diagonal QN1-KR7 unobstructed)14 g4!? Qb8!! (A-the coup de grace no less than 10 move deep. Note that 14...Qc7? is refuted after 15f4 Bg6 16 Ndb5!)15 gh5 (A-Hopeless is 15 f4 Bg6 16 Bf3 Nc5 so Kuroda says "Show me".

L-It's hard to believe that white could be in such trouble with only 2 black attacking pieces to contend with. Had Kuroda envisioned the position a few moves hence he would have preferred either 15 P-B4 or 15 R-B2)15...Bh2+ 16 Kh1 Qg3 17 Bd3 (L-Worth consideration is 17 R-KN1 offering the exchange in hopes of breaking the attack. A-17 Ne4 is a try)17 Qh3 18 Qe2 Bf4+ 19 Kg1 Qg3+ 20 Kh1 (L-White can't play QN2 because the N on Q4 will hang after 20 BxP+ A-The ensuing Q movement is interesting and unusual; usually one zig-zags closer with the Q by checking-Bradford's Q goes farther away!)20...Qh4+ 21 Kg1 Qg5+ 22 Kh1 Qh5+ 23 Kg1 Qg5+ 24 Kh1 Qh6+ 25 Kg1 Be3+ (A-The point)26 Kg2 Nh5 (L-Too many threats) 27 RESIGNS This tied Bradford for first w/ Browne.

US OPEN 1984

Lorenzo GASKILL (2173) - SHIRAZI (2563)

Sicilian B40

1 e4 c5 2 Nf3 e6 3 d4 cd 4 Nxd4 Nf6 5 Nc3 Bb4 6 Bd3 e5 7 Nde2 d5 8 ed Nx d5 9 0-0 Nxc3

Losing time to double pawns he will eventually straighten. Alekhine, in this position, played 9...Nc6.

10 bc Bc5 11 c4 0-0 12 Bb2 Nc6 13 Be4 Bg4 14 Bd5 Nb4 15 Qd2 Re8 16 Ng3 Qb6 17 Rab1 Nxd5 18 cd Qg6 19 Kh1 Rad8 20 c4 b6 21 f3 Bc8 22 Ne4 *



Black does have the Two Bishops, it is true; but White has a protected passed pawn, a dominating knight, and no weaknesses.

22...Bf8 23 Rfd1 f5 24 Ng3 Bc5 25 Re1 f4 26 Ne4 Bf5 27 Rbd1 Be3 28 Qd3 Bxe4 29 Qxe4 Qxe4 30 fe Rc8 31 d6 Rx c4 32 d7 Rd8 33 Bxe5 Kf8 34 g3 g5 35 Rd6 Bc5 36 Rd5 Bb4 37 Red1 f3 38 Bd4 Be7 39 Rf5+ Kg8 40 Rd5 Rc2 41 Be5 Kf7 42 g4 Rc5 43 Rxc5 bc 44 Bc7 Ke6 45 Bxd8 Bxd8 46 Kg1 Ke5 47 Kf2 Kf4 48 h3 c4 49 Rc1 Bb6+ 50 Kf1 Ke5 51 Rxc4 Ke6 52 Rd4 Ke7 53 Rd5 h6 54 Rd3 f2 55 Rd1 Kd8 56 e5 Ke7 57 Rd2 Ba5 58 Rd3 Bb6 59 Rd6 Bc7 [1-0]

U.S. OPEN 1984

1984 USCF MEETINGS by Harold Winston
USCF Policy Board Member-at-Large

ELECTIONS: President - Steve Doyle;
Vice President - Myron Lieberman;
Secretary - Woodrow Harris; Treasurer - Tony Cottell; Member at Large - Harry Sabine; New Regional VP Region X - Charles Davis.

HONORS: Distinguished Service Awards were given to Pearle mann WI, Dr. George Tiers MN, and Lynne Babcock TX. The Koltanowski Gold Medal went to Jose Cuchi NY and the Massachusetts Chess Association received the Koltanowski Silver Medal. George Cunningham was named Life Voting Member and Delegate at Large and Frank Elley was declared a Life Voting Member.

UPCOMING NATIONAL TOURNAMENTS: The 1986 US Open will be held August 3-15 at Great Gorge Resort in NJ.

SUDDEN DEATH: For all non-scholastic and non-grand prix events, Sudden Death may be used as a 2nd time control after a 1st control of at least 30/30.

YEAR OF: 1985 will be the Year of the Chess Club and a directory of USCF affiliated clubs will appear in the catalogue or CHESS LIFE.

CHESS LIFE: Larry Parr was selected as the new editor. For one year CL will publicize the Victory Awards program and tell how you can earn one by winning tournament games. Past restrictions on alcohol and tobacco advertising were lifted.

TLAs: The name of the sponsoring affiliate must be listed in TLAs at no cost to the sponsor.

NATIONAL CHESS DAY: National Chess Day will be celebrated October 5, 1985.

1984 US OPEN EVENT

THE 1984 US OPEN HELD IN FT WORTH AUGUST 4TH THROUGH THE 12TH, ORGANIZED BY THE GREATER FT WORTH CHESS CLUB AND DIRECTED BY BILL LUKOWIAK OF BOSTON DREW 517 PARTICIPANTS, INCLUDING 4 COMPUTERS.

THE 1984 US OPEN WAS NOT JUST A CHESS TOURNAMENT IT WAS A CHESS HAPPENING INCLUDING FIVE SIMULS BY GRAND MASTERS HENLEY BROWNE, KUDRIN, GUREVICH, US CHAMPION LEV ALBURT AND WORLD FAMOUS BELLE STAR; LECTURES BY HENLEY, ALBURT AND BROWNE; THE US SPEED CHESS CHAMPIONSHIP; A WORLD CLASS SPEED CHESS TOURNAMENT; TWO 30/30 TORNADOS; AND THE USCF ANNUAL CONVENTION.

THE 1984 US OPEN TOURNAMENT WAS WON BY GRANDMASTERS KUDRIN AND DZINDZIHASHVILA. HUNDREDS OF TEXANS PLAYED IN EVENT. SOME GAMES BY TEXANS ARE ELSEWHERE IN THIS ISSUE OF TEXAS KNIGHTS. NEXT MONTH WE WILL PRINT THE WIN OVER WALTER BROWNE BY TEXAN ROBERT HAMILTON AND THE DRAW BY TEXAN ROBERT GREEN, ALSO TEXAN FREDERICK SPECKS' DRAW WITH 388 POINT HIGHER RATED NOVAG CONSTELLATION.





1984 U.S. OPEN



TEXAS PLAYERS

Jack SHAW (2015) - Robert WEINBERG (2148)

Alekhine's

1 e4 Nf6 2 e5 Nd5 3 d4 d6 4 Nf3 g6
 5 Bc4 Nb6 6 Bb3 Bg7 7 0-0 0-0 8 Bf4
 Nc6 9 ed cd 10 c3 Bf5 11 Na3 Rc8 12
 Rel Re8 13 Ng5 d5 14 g4 Bd7 15 Qf3 Rf8
 16 Qg3 Na5 17 Bc2 f6 18 Nxh7 Kxh7 19
 Qh4+ Kg8 20 Bxg6 Rf7 21 Qh7+ Kf8 22 Bh6
 e6 23 Bxf7 Bxh6 24 Bxe6 Bxe6 25 Rxe6
 Bg7 26 Rael Nc6 27 Nb5 Nc4 28 Qh5 Qd7
 29 Qf5 Qf7 30 Rxf6 Bxf6 31 Qxc8+ Kg7
 32 b3 Nd2 33 Kg2 Ne4 34 Re3 Nxf2 35
 Nd6 Qg6 36 Nf5+ Kh7 37 Qd7+ [1-0]

SHIRAZI (2563) - John HYLTI (2073)

Sicilian Wing Gambit B20

1 e4 c5 2 b4

That's the Kamran we know and love!

2...cb 3 a3 e5 4 Nf3 Nc6 5 Bc4 Nf6
 6 Ng5 Bc5!? 7 ab d5! 8 ed Bxf2+!

*



What's this?! Black is playing "Kamran-chess" too!

9 Kxf2 Ng4+ 10 Kel Qxg5 11 dc Nxh2
 12 Rxh2 Qg3+ 13 Kf1 Qxh2 14 Qf3 Qh1+
 15 Ke2 0-0 16 Na3 bc 17 Bb2 Qh4 18
 Qf2 Qg4+ 19 Kf1 a5 20 Be2 Qxb4 21 Nc4
 Ba6 22 Ba3 Qa4 23 Nb6 Bxe2+ 24 Kxe2
 Qg4+ 25 Qf3 Qd4 26 Nxa8 Qxa1 27 Bxf8
 Kxf8 28 Qxc6 Qd4 29 Nb6 h5 30 Qa8+
 Ke7 31 Nd5+ Kd6 32 Ne3 Qc5 33 Qf8+
 Kc6 34 Qc8+ Kb5 35 Qb7+ Qb6 36 Qxf7
 Qf6 [1-0]

The battlefield is still; only one Kamran rides away...

GM Roman DZINDZICHASHVILI (2602) - A FORSTER (2090)

QGA D20

1 d4 d5 2 c4 dc 3 e4 e5

This line has recently undergone a great deal of analysis. One hairy possibility is: 4 Bxc4!? Qxd4 5 Qb3 Qxe4+ 6 Be3 Qg6 7 Nf3 Nd7 8 Nc3 c6 9 0-0-0! (Kuzminikh) 9..Be7 10 Rxd7 Qxg2 11 Nxe5! Qxh1+ 12 Rd1.

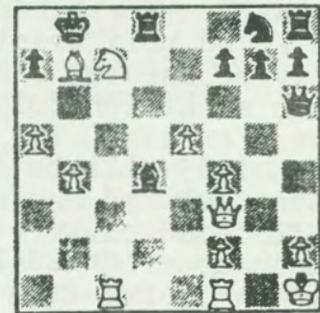
4 Nf3 Bg4

Dzindzi has played both sides of 4..Bb4+. The text is inferior.

5 Bxc4 Bxf3 6 Qxf3 Qf6 7 de Qg6 8
 0-0 Nc6 9 Bf4 Nd4 10 Qd1! Qxe4 11
 Nc3 Qxf4 12. Nd5 Nf3+ 13 gf Qg5+ 14
 Kh1 0-0-0 15 f4 Qg6 16 Qf3 Bc5

The last piece Black develops!

17 Rac1 Kb8 18 Bd3 Qc6 19 Be4 Qb5
 20 a4 Qa6 21 Nxc7 Qb6 22 Nd5 Qa6 23
 b4 Bb6 24 a5 Bd4 25 Nc7 Qh6 26 Bxb7*



[1-0] [time]

As Hans Kmoch once said: "What a pity to lose such a position - on time."

RACHELS (2380) - WALL (2215)

Benko Declined A57

1 d4 Nf6 2 c4 c5 3 d5 b5 4 a4 bc 5
 Nc3 d6 6 e4 e5 7 Bxc4 Be7 8 Nf3 Bg4
 9 0-0 0-0 10 Be2 Bxf3 11 Bxf3 Ne8 12
 Be2 Bg5 13 g3 Bxc1 14 Qxc1 Nd7 15 f4
 ef 16 gf f5 17 ef Rxf5 18 Bg4 Rf8 19
 Ne4 h6 20 Be6+ Kh8 21 Qe3 Ndf6 22 Ng5
 Qb6 23 Nf7+ Kh7 24 Qd3+ g6 25 Qh3 Rx
 f7 26 Bxf7 Qxb2 27 Rael Qd4+ 28 Kh1
 Ne4 29 Qg2 N8f6 30 Bxg6+ [1-0]

Marlo MICAYABAS (2325) -
BRITO (2437)

Najdorf Sicilian B90

1 e4 c5 2 Nf3 d6 3 d4 cd 4 Nxd4 Nf6
5 Nc3 a6 6 Be3 e5 7 Nb3 Qc7 8 Qd2 Be6

In this new system, White usually plays f2-f3, g2-g4, and castles long with a kingside pawnstorm. Brito very sensibly decides his king belongs on the other wing, whereupon White alters his plans too. Confused?

9 f4 Nbd7 10 0-0-0 0-0-0 11 Kbl Kb8
!2 f5 Bc4 13 Bxc4 Qxc4 14 Rhe1 Rc8
15 Bg1 Be7 16 a3 Rhd8 17 g4 h6 18 h4
d5 19 Na5 Qc7 20 Nxd5 Nxd5 21 ed Ka8
22 Re4 Bc5 23 Bxc5 Nxc5 24 Re2 f6 25
Qb4 Rd7 26 Red2 Ne4 27 Qxe4 Qxa5 28
g5 hg 29 hg Qb5 30 gf gf 31 d6 Rc4 32
Qe2 Qc5 33 Qh5 Qc8 34 b3 Rc6 35 Qh1
Qf8 36 Qd5 Rcx d6 37 Qxd6 Rxd6 38 Rxd6
Qh6 39 Rg1 Qf8 40 Rgd1 Qh6 41 Re6 Qg5
42 Rd8+ Ka7 43 Rdd6 Qxf5 44 Rxf6 Qh7
45 Rh6 Qf5 46 Rhf6 Qh7 47 Rh6 Qf5
48 Rhf6 [½-½]

Brian SKUTT (1823) -
Arturo De La GARZA (2300)

2 Knights C55

1 e4 e5 2 Nf3 Nf6 3 Bc4 Nc6 4 d4 ed
5 c3 Nxe4 6 Qe2 d5 7 Nbd2 Bf5 8 Ng5
Be7 9 Nxf7 Kxf7 10 Qf3 Nf6 11 Qxf5
dxc4 12 Nf3 * *



What does
White have for
his piece?

12 ...Re8?? (h6, Qd7) 13 Ng5+ Kf8

Best (!), considering the alternative
is Philidor's Legacy.

14 Ne6+ Kg8 15 Nxd8 Bc5+ 16 Ne6 Rxe6
17 Qxe6+ Kf8 18 0-0 Rd8 19 Qxc4 [1-0]

BONE (2334) - HAESSLER (2201)

Sicilian B40

1 e4 c5 2 Nf3 e6 3 d4 cd 4 Nxd4 Nf6
5 Nc3 Bb4 6 e5 Nd5 7 Qg4 0-0! 8 Bh6 g6

The newest wrinkle. As in so many
other lines of the Sicilian, Black
sacrifices the exchange for dark-
square counterplay. Will it rehabil-
itate this variation too?

9 Bxf8 Qxf8 10 Ndb5 a6 11 Nd6 Nc6
12 Qg3 Nxe5 13 Nc4 Nxc4 14 Bxc4 Nxc3
15 bc Qg7 16 0-0 Bxc3 17 Rad1 d5 18
Rd3 Be5 19 Qe3 b5 20 Bb3 a5 21 Re1 Bd6
22 Qb6 Qf8 23 Qc6 Rb8 24 a4 ba 25 Bxa4
Bb7 26 Qd7 Ba6 27 Rb3 Bb4 28 Re1 Bc4
29 Rf3 Rd8 30 Rxf7 Rxd7 31 Rxf8+ Kxf8
32 Bxd7 Ke7 33 Ba4 Kd6 34 g3 d4 35 f3
e5 36 Kf2 Kc5 37 Ral Bb5 38 Bb3 Bc3
39 Ra2 Kb4 40 h4 h6 41 g4 g5 42 hg hg
43 Kg2 a4 44 Be6 a3 45 Bb3 Bb2 46 Kf2
Kc3 47 Ke1 Bc6 48 Ke2 Bb5+ 49 Kdl d3
[0-1]

LIGON (2244) - BONIN (2404)

Scheveningen Sicilian

1 e4 c5 2 Nf3 e6 3 d4 cd 4 Nxd4 Nf6
5 Nc3 d6 6 f4 a6 7 Qf3 Qc7 8 Be3 b5
9 Bd3 Nbd7 10 g4 b4 11 Nce2 Nc5 12 g5
Nfxe4 13 Bxe4 Nxe4 14 Qxe4 Bb7 15 Nx
e6 fe 16 Qxe6+ Be7 17 Rf1 Qxc2 18 f5
Qe4 19 Qxe4 Bxe4 20 f6 Bd8 21 Rd1 d5
22 Bc5 gf 23 gf Kf7 24 Bxb4 Re8 25 Bc3
Bc7 26 Rf2 Re6 27 Kf1 Rg8 28 Nf4 Bxf4
29 Rxf4 d4 30 Rxd4 Bg2+ 31 Kf2 Bc6 32
Rg4 Rxf6+ 33 Rdf4 Rxf4+ 34 Rxf4+ Ke8
35 Rh4 Rf8+ 36 Ke3 Rf7 37 Kd4 Kd7 38
Rh6 Kc7 39 Ke5 Kb7 40 Ke6 Rd7 41 Be5
Kc8 42 Bd6 Be4 43 Rf6 Rg7 44 Rf4 Bb1
45 Ra4 Kb7 46 Kd5 Rg2 47 Rb4+ Ka8 48
a4 Rg7 49 Kc6 Rb7 50 Rf4 Ka7 51 Bc5+
Ka8 52 b4 Bg6 53 b5 ab 54 a5 Be8+ 55
Kd6 Rd7+ 56 Ke6 Kb7 57 Rf8 [½-½]

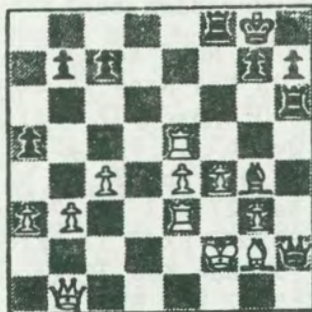
Thomas BRAUNLICH (2256) -
Sylvester TURNER (1796)

Sicilian

1 e4 c5 2 Nf3 Nc6 3 d4 cd 4 Nxd4 Nf6
5 Nc3 g6 6 Nxc6 bc 7 e5 Nh5 8 Qf3 Qc7
9 Bc4 Qxe5+ 10 Be3 Nf6 11 0-0-0 Bg7
12 Rhe1 Qa5 13 Bd4 Qg5+ 14 Kbl d5 15
Nxd5 cd 16 Bxd5 Rb8 17 Bc6+ Kf8 18 B
e5 Rxb2+ 19 Bxb2 Bh6 20 Bcl Qh4 21 Bx
h6+ Qxh6 22 Rd8+ Kg7 23 Rxh8 [1-0]

CIAFFONE - PROBASCO Dutch A99

1 Nf3 e6 2 c4 f5 3 g3 Nf6 4 Bg2 d6
5 d4 Be7 6 Nc3 0-0 7 0-0 Qe8 8 b3 a5
9 Bb2 Bd8 10 Re1 Qg6 11 Qd3 Nc6 12
Rad1 e5 13 de de 14 e4 f4 15 Nd5 fg
16 hg Qh5 17 Nh2 Nb4 18 Qb1 Ng4 19
Nxg4 Bxg4 20 Rd2 Bg5 21 Ne3 Bxe3 22
Rxe3 Rf6 23 a3 Nc6 24 Rd5 Raf8 25 f4
Rh6 26 Bxe5 Qh2+ 27 Kf2 Nxe5 28 Rxe5



The combination is easy to spot,
once you see that all that stands
between the white rook and the black
queen are a couple of pawns...

28...Rxf4+! 29 gf Qxf4+ 30 Rf3 Qxe5
31 Qd3 Bxf3 32 Bxf3 Rd6 33 Qe2 Qh2+
34 Ke3 Qxe2+ 35 Kxe2 b6 [0-1]

Guil RUSSEK (2353) -

Clarence CALLAWAY (1847)

Alapin Sicilian B22

1 e4 c5 2 c3 Nf6 3 e5 Nd5 4 d4 cd
5 cd e6 6 Nf3 Nc6 7 a3 d6 8 Bd3 de
9 de Qc7 10 0-0 g6 11 Re1 Bg7 12 Qe2
0-0 13 Bd2 Bd7 14 Nc3 Nxc3 15 Bxc3
Rac8 16 Rad1 Rfd8 17 Qe4 Ne7 18 Qh4
Nf5 19 Bxf5 ef 20 Rd6 Bc6 21 Rld1 R
e8 22 e6 fe 23 Ng5 Bxc3 24 Rd7 [1-0]

QUINTEROS (2614) - dela GARZA (2304)

King's Indian Reversed

1 Nf3 Nf6 2 g3 d5 3 Bg2 g6 4 0-0 Bg7
5 d3 0-0 6 c3 Nbd7 7 Qc2 e5 8 c4 c6 9
cd Nxd5 10 a3 N7b6 11 Nbd2 Qc7 12 Nb3
Ne7 13 e4 f5 14 Bd2 fe 15 de Bg4 16
Ng5 h6 17 f3 Bd7 18 Nh3 Be6 19 Nc5 Bf7
20 Ba5 Rad8 21 Rfd1 Qc8 22 Rxd8 Rxd8
23 Nf2 Rd6 24 Bh3 Qb8 25 Bc3 Rf6 26
Qe2 Bc4 27 Qe3 Rd6 28 Ng4 Qd8 29 Nxb7
Rd1+ 30 Kf2 Qd3 31 Qxd3 Rxd3 32 Nc5
Rd8 33 Ne3 Bf7 34 Ne6 Bxe6 35 Bxe6+
Kf8 36 a4 h5 37 a5 Nd7 38 Rd1 Ke8
39 Nc4 [1-0]

Tony CAMPBELL (2073) -

McCAMBRIDGE (2522)

King's Indian Rev C00

1 e4 e6 2 d3 c5 3 Nf3 Nc6 4 g3 d5
5 Nbd2 g6 6 Bg2 Bg7 7 0-0 Nge7 8 Re1
0-0 9 c3 h6 10 h4 e5 11 Nb3 b6 12 d4
ed 13 ed Nxd5 14 cd c4 15 Nbd2 Bg4
16 Nxc4 Nxd4 17 Re4 Nxf3+ 18 Bxf3
Bxf3 19 Qxf3 Rc8 20 Qe2 Nf6 21 Re3
Qd4 22 Ne5 Rfd8 23 Rd3 Qe4 24 Qxe4
Nxe4 25 Rxd8+ Rxd8 26 Bf4 g5!

Despite the simplification, Black
still has a considerable advantage.

27 hg hg 28 Nc6 Rd7 29 Bb8 Rd2 30
Re1 Nxf2 31 Bxa7 Nh3+ 32 Kh1 Nf2+
33 Kg1 Nh3+ 34 Kh1 Rxb2 35 Re8+ Kh7
36 Rb8 b5 37 Bd4 Bxd4 38 Nxd4 b4 39
g4 Nf2+ 40 Kg1 Nxg4 41 a3 ba [0-1]

WATSON (2506) - Brian WALL (2215)

Benko A57

1 d4 Nf6 2 c4 c5 3 d5 b5 4 cb a6 5 e3
d6 6 Nc3 g6 7 a4 Bg7 8 Nf3 0-0 9 Ra3
ab 10 Bxb5 Ba6 11 0-0 Bxb5 12 ab Nbd7
13 Qb3 Nb6 14 e4 Nfd7 15 Be3 Qc7 16 Rf
a1 Qb7 17 Ra6 f5 18 ef gf 19 Ng5 Bxc3
20 Qxc3 Qxd5 21 Nh3 e5 22 Bh6 Rf6 23
Rxa8+ Nxa8 24 Qd2! Nab6 25 Qg5+ Kf7 26
Qg7+ Ke8 27 Qh8+ Ke7 28 Bg5 Qf7 29 Ra7
Nd5 30 Qc8 N5b6 31 Qc6 Ke6 32 Bxf6 Qx
f6 33 f4 h6 34 fe Qxe5 35 Ra1 Qe4 36
Rd1 Qxc6 37 bc Nb8 38 Re1+ Kd5 39 c7
Na6 40 Nf4+ Kc6 41 Re6 Nxc7 42 Rxh6 c4
43 Rf6 Na4 44 Rxf5 Nxb2 45 Ne2 Nb5 46
h4 Nd3 47 h5 Ne5 48 h6 Ng6 49 h7 Nc7
50 Rf6 [1-0]

Richard LEMON (2203) - GRUENFELD (2435)

Benoni A72

1 d4 Nf6 2 c4 c5 3 d5 e6 4 Nc3 ed
5 cd d6 6 e4 g6 7 Nf3 Bg7 8 Be2 0-0
9 Bf4 a6 10 a4 Nh5 11 Bg5 Qb6 12 Qc2
Bg4 13 0-0 Nd7 14 h3 Bxf3 15 Bxf3 Nh
f6 16 a5 Qc7 17 Qd2 Rfe8 18 Qf4 Re5
19 Qh4 Rae8 20 Ra4 b5 21 ab Qxb6 22
Rb1 a5 23 Bd2 R5e7 24 Nd1 Qb3 25 Nc3
Ra8 26 Bd1 Qb8 27 Bg5 Qf8 28 Rba1 h6
29 Bc1 Nb6 30 Rxa5 Rxa5 31 Rxa5 g5
32 Qg3 Nxe4 33 Nxe4 Rxe4 34 Qd3 f5
35 Be3 Nc4 36 Ra7 Nxb2 37 Qc2 Nxd1
38 Qxd1 Qe8 39 Qb3 Rb4 40 Qd3 Qe5
41 Ra8+ Kh7 42 g3 c4 43 Qc2 Qxd5 44
Re8 Rb2 45 Qc1 Qd3 46 Kg2 Rb1 [0-1]

Hometown Boy makes whopper...

Jerry MILBURN (2224) -
John HOWELL (1779)

Sicilian Scheveningen

1 e4 c5 2 Nf3 d6 3 d4 cd 4 Nxd4 Nc6
5 Nc3 a6 6 Bc4 e6 7 0-0 Be7 8 Be3 N
f6 9 Bb3 Bd7 10 f4 0-0 11 Kh1 Rc8 12
g4 Nxd4 13 Bxd4 Bc6 14 Qe2 b5 15 g5
Ne8 16 Qh5?! b4 17 Rf3 bc 18 Re1

He sees too late that after 18 Rh3
Bxe4+ covers h2.

18...cb 19 Bxb2 Qa5 20 Bc3 Qb5 21
Rh3 (what's to lose!?)... Bxe4+ 22
Rxe4 Qf1 #

ARDAMAN (2264) - MEYER (2418)

Pirc B07

1 g3 g6 2 Bg2 Bg7 3 e4 d6 4 d4 Nf6
5 Nc3 0-0 6 Nge2 c6 7 a4 Nbd7 8 h3
Qc7 9 0-0 Rb8 10 f4 Rd8 11 Qe1 Nf8
12 g4 b6 13 Be3 a6 14 Ng3 Bb7 15 Qf2
N6d7 16 Rad1 c5 17 d5 b5 18 ab ab 19
Nxb5 Qb6 20 c4 Ba6 21 b4 Bxb5 22 bc
Nxc5 23 cb Qxb5 24 e5 Nd3 25 Qd2 Nc5
26 e6 fe 27 de Ncxe6 28 Bd5 Kh8 29 f5
Nc7 30 Bf7 Qb2 31 Qd3 Qe5 32 Ne2 Rb2
33 Rf2 Nb5 34 Bc1 Rb4 35 fg hg 36 Bx
g6 Nd4 37 Nf4 Rc8 38 Qf1 Rb3 39 Bd3
Nde6 40 Nh5 Bf6 41 Nxf6 ef 42 Qg2 Rc
c3 43 Rf3 Qc5+ 44 Qf2 Qxf2+ 45 Kxf2
Rxd3 46 Rfxd3 Rxd3 47 Rxd3 [0-1][time]

HENLEY (2562) - BROWNE (2631)

Rubinstein Nimzo

1 d4 Nf6 2 c4 e6 3 Nc3 Bb4 4 e3 0-0
5 Nge2 d5 6 a3 Bd6 7 c5 Be7

The same line that worked so well
for Dzindzi against Gurevich in Rd 7.

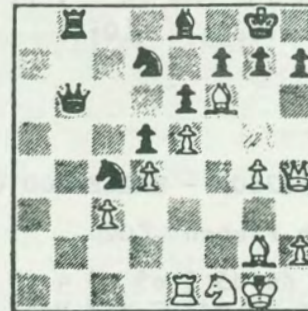
8 b4 b6 9 Nf4 c6 10 Bd2 Nbd7 11 Be2
e5 12 Nd3 ed 13 ed Ne4 14 b5 Nxc3 15
Bxc3 cb 16 Qb3 bc 17 Qxd5 Rb8 18 dc
Nxc5 19 Nb4 Bb7 20 Qh5 Ne4 21 Rd1 Qb6
22 Bd4 Bc5 23 Bxc5 Qxc5 24 Qxc5 Nxc5
25 0-0 a5 26 Na2 Be4 27 f3 Bc2 28 Rd5
Rfc8 29 Rc1 Nb3 30 Re1 Nc5 31 Rc1 Nb3
32 Re1 b4 33 ab ab 34 Ba6 Rf8

Due to timepressure, the rest of
the score was illegible [1-1,39]

GM Arnold DENKER (2400) -
Tom PATTON (2031)

QP Game

1 d4 d5 2 Nf3 e6 3 g3 c5 4 c3 Nc6
5 Bg2 Nf6 6 0-0 Qb6 7 e3 cd 8 ed Bd6
9 Re1 0-0 10 Nbd2 Rd8 11 Ne5 Qc7 12
f4 b5 13 a3 Bd7 14 Qe2 Be8 15 Nf1 a5
16 Bd2 b4 17 ab ab 18 g4 bc 19 bc Rx
a1 20 Rxa1 Qb6 21 Re1 Bxe5 22 fe Nd7
23 Qf2 Na5 24 Qh4 Nc4 25 Bg5 Rb8 26
Bf6 *



26... gf 27 ef Nxf6 28 Qg5+ Kf8 29
Qxf6 Qb2 30 Rxe6 Kg8 31 Bxd5 [1-0]

Kristiaan GARDNER (1850) - IM Kamran
(Is there another?) SHIRAZI (2563)

Closed Sicilian B23

1 e4 c5 2 Nf3 e6 3 Nc3 a6 4 d3 d5
5 ed ed 6 6 d4 c4 7 g3 Nf6 8 Bg2 Q
e7+ 9 Qe2 Bf5 10 Qxe7+ Bxe7 11 Ne5
Nc6 12 Nxd5 Nxd5 *
13 Bxd5 Nxd4 *

14 0-0 f6 15 Bx
b7 Ra7 16 Bc6+ K
f8 17 Nxc4 Nxc6
18 c3 Bd3 [0-1]



DUNNING (2337) - HENLEY (2562)

King's Indian E96

1 d4 Nf6 2 c4 g6 3 Nc3 Bg7 4 e4 d6
5 Be2 0-0 6 Nf3 Nbd7 7 0-0 e5 8 Re1
c6 9 Rb1 a5 10 Bf1 Re8 11 d5 Nc5 12
b3 Bd7 13 Nd2 Qb8 14 a3 cd 15 cd Rc8
16 Nb5 Bh6 17 f3 Kg7 18 a4 b6 19 Na3
Nh5 20 N2c4 Bxc1 21 Qxc1 f5 22 Qe3 fe
23 fe Nf6 24 Nd2 b5 25 Nxb5 Ng4 26
Qe2 Nd3 27 Qxd3 Bxb5 [0-1]

Philidor's Legacy follows.

WAISHEK (2191) - LARSEN (2334)

Sicilian Scheveningen B84

Featuring a cute "end run" by
Black's queen rook.

1 e4 c5 2 Nf3 d6 3 d4 cd 4 Nxd4 Nf6
5 Nc3 a6 6 Be2 e6 7 f4 Be7 8 0-0 0-0
9 a4 Nc6 10 Kh1 Bd7 11 Be3 Rc8 12 g4
d5 13 ed Nxd5 14 Nxd5 ed 15 Bf3 Re8
16 Nxc6 bc 17 Qd3 Bd6 18 h3 Qh4 19
Kg2 Rb8 (Hike!) 20 b3 Rb4 (down to
the 50, the 40, the 25...) 21 Be2
Rbe4 (He scores!) [0-1]

BRAUNLICH (2250) - HAZLEWOOD (2093)

Advance French C02

1 e4 e6 2 d4 d5 3 e5 c5 4 c3 Nc6
5 Nf3 Qb6 6 g3 Bd7 7 Bh3 Nge7 8 0-0
Ng6 9 Na3 cd 10 cd f6 11 ef gf 12 Re1
Kf7 13 Nc2 Re8 14 Ne3 Qd8 15 b3 Bd6
16 Ng2 a5 17 Bb2 Re7 18 Nfh4 Bb4 19
Re3 a4 20 a3 Bd6 21 b4 Bb8 22 Qh5 Kg7
23 Kh1 Qe8 24 Qe2 Na7 25 f4 f5 26 Rae1
Bb5 27 Qh5 Rf8-28 Bxf5 ef 29 Rxe7+ Nx
e7 30 Qg5+ [1-0]

Ricky DAVIS (1879) - GM Art BISGUIER
(2539)

Nimzoindian E43

1 d4 Nf6 2 c4 e6 3 Nc3 Bb4 4 e3 b6
5 Bd3 Bb7 6 Nf3 0-0 7 0-0 d5 8 a3 Bd6
9 b4 dc 10 Bxc4 a5 11 Rb1 ab 12 ab
Nbd7 13 Bd3 e5 14 d5 Qe7 15 e4 Bxb4
16 Qb3 Bd6 17 Nb5 Nc5 18 Qc2 Ba6 19
Re1 Nxd3 20 Qxd3 Nd7 21 Bg5 f6 22 Bd2
Nc5 23 Qc2 Qd7 24 Nxd6 Bd3 25 Qb2 Bx
b1 26 Qxb1 cd 27 Nh4 Ra4 28 Nf5 Rfa8
29 f3 Ra2 30 Be3 b5 31 Rc1 Re2 32 Bx
c5 dc 33 Rxc5 Qa7 34 Qc1 Qxc5 [0-1]

ROHRBAUGH (2156) - GAMBLE (2325)

English

1 c4 c5 2 Nf3 Nc6 3 Nc3 e6 4 d4 cd
5 Nxd4 Nf6 6 Ndb5 d5 7 cd ed 8 Bf4 d4
9 Nc7+ Ke7 10 Nxa8 dc 11 Qxd8+ Kxd8
12 0-0-0+ Bd7 13 g3 h6 14 Bh3 g5 15
Rxd7+ Nxd7 16 Rd1 cb+ 17 Kxb2 gf 18
Rxd7+ Kc8 19 Rc7+ Kd8 20 Rxb7 fg 21
hg Bg7+ 22 Kbl Rf8 23 Rd7+ Kc8 24 Nc7
Kb8 25 Na6+ [1-0]

McLEE (2208) - GONZALES (2062)

Yugoslav Dragon B78

1 e4 c5 2 Nf3 d6 3 d4 cd 4 Nxd4 Nf6
5 Nc3 g6 6 Be3 Bg7 7 f3 Nc6 8 Qd2 0-0
9 Bc4 Bd7 10 h4 Qc7 11 Bb3 Ne5 12 h5
Nc4 13 Bxc4 Qxc4 14 0-0-0 Rfc8 15 hg
fg 16 Bh6 Bh8 17 Bg5 Rc5 18 Nb3 Rac8
19 Nxc5 Rxc5 20 Bxf6 Bxf6 21 Nd5 Bg5
22 f4 Qxa2 23 Qe3 Ba4 24 Nb4 Qal+ 25
25 Kd2 Qxb2 26 fg Qxb4+ 27 Ke2 Rxc2+
28 Kf3 Bb5 29 Rc1 Rc5 30 Qf4 Bc6 31 Rx
c5 Qxc5 32 Rf1 Qd4 33 Kg3 Qe5 34 Qxe5
de 35 Kf3 Kg7 36 Ra1 h6 [$\frac{1}{2}$ - $\frac{1}{2}$]

John DUNNING (2337) - GASKILL (2173)

King's Indian E92

1 d4 g6 2 c4 Bg7 3 Nc3 d6 4 Nf3 Nf6
5 e4 0-0 6 Be2 e5 7 Be3 Ng4 8 Bg5 f6
9 Bh4 h5 10 h3 Nh6 11 de de 12 Qxd8
Rxd8 13 Nd5 g5 14 Nxc7 gh 15 Nxa8 Na6
16 c5 Nxc5 17 0-0 Be6 18 Nc7 Bf7 19
Rfd1 Rxd1+ 20 Rxd1 Nxe4 21 Nxh4 Bf8
22 Bf3 Nd6 23 Bd5 Kg7 24 Ne6+ [1-0]

CALOGRIDIS (2166) - DUNNING (2340)

Petrosian Benko

1 d4 Nf6 2 c4 c5 3 d5 b5 4 cb a6
5 e3 g6 6 Nc3 Bg7 7 Nf3 0-0 8 a4 Bb7
9 Ra3 e6 10 de fe 11 Qd6 Ne4 12 Nxe4
Bxe4 13 Be2 Rf5 14 0-0 Bf8 15 Qd1 Rd5
16 Qb3 Bd6 17 Rd1 c4 18 Qxc4 Rxd1+ 19
Bxd1 Bd5 20 Qd4 Bf8 21 e4 Bg7 22 Qd3
Bb7 23 e5 ab 24 ab Qc7 25 Rc3 Qa5 26
Qc4 h6 27 Qd3 g5 28 Bc2 Qd8 29 Qh7+
Kf8 30 Bg6 Ra5 31 Bh5 [1-0]

SHTERN (2280) - BISGUIER (2539)

Semi-Slav D46

1 d4 Nf6 2 c4 e6 3 Nf3 d5 4 Nc3 c6
5 e3 Nbd7 6 Bd3 Bb4 7 0-0 0-0 8 Qc2
Bd6 9 e4 dc 10 Bxc4 e5 11 h3 Qe7 12
a4 ed 13 Nxd4 Qe5 14 Nf3 Qh5 15 Be2
Qa5 16 Bd2 Bb4 17 Bf4 Re8 18 e5 Bxc3
19 bc Nd5 20 Bd2 Nxe5 21 c4 Qc5 22
Nxe5 Rxe5 23 Bd3 Nf6 24 Bc3 Rg5 25 Bx
f6 gf 26 Bxh7+ Kh8 27 h4 Rg4 28 Be4
Be6 29 Rfb1 Rag8 30 h5 Bxc4 31 Rc1 b5
32 ab cb 33 Ra6 Qg5 34 f4 Rxf4 [0-1]

More games next issue

TEXAS CELEBRATES 50TH SOUTHWEST OPEN

SAN ANTONIO AND TEXAS CHESS CELEBRATED A MILESTONE LABOR DAY WEEKEND. TOGETHER WITH THE SPONSORSHIP OF CHURCH'S FRIED CHICKEN, THEY MARKED THE 50TH ANNIVERSARY OF THE SOUTHWEST OPEN CHESS CHAMPIONSHIP.

ORIGINALLY HELD IN SANTONIO IN 1935, THIS CHESS EVENT HAS GROWN TO BECOME THE PREMIER TOURNAMENT IN THE YEARLY CHESS OFFERING OF THE TEXAS CHESS ASSOCIATION.

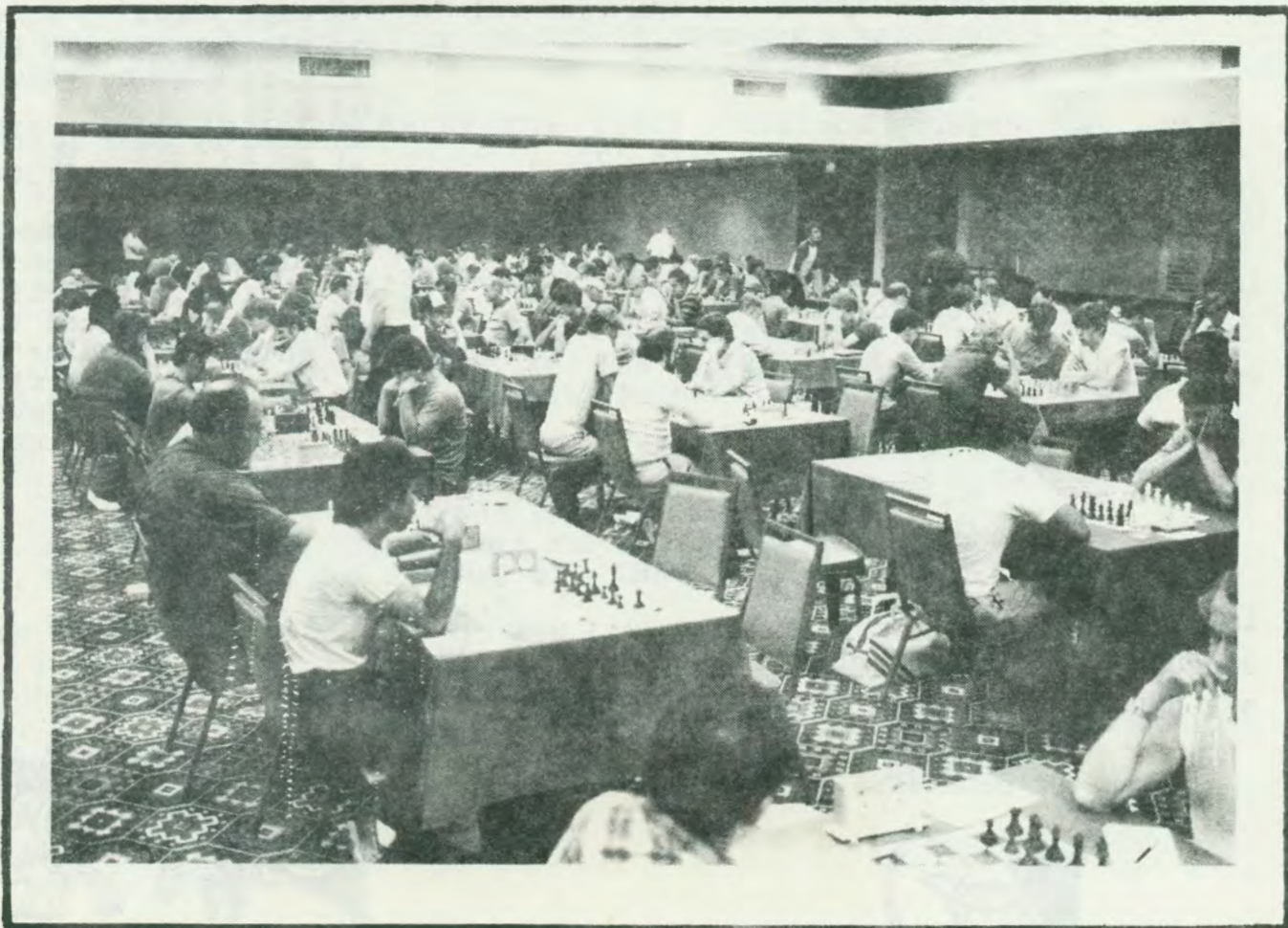
TOPPED BY SIX TIME US CHAMPION GRANDMASTER WALTER BROWNE AND MANY TIMES TEXAS CHAMPION MASTER JOE BRADFORD, A FIELD OF 236 GATHERED AT THE LUXURIOUS LA MANSION DEL NORTE TO COMPETE FOR \$9,200 IN PRIZES WITH \$2,000 FOR FIRST.

THE 7 ROUND MARATHON EVENT TESTED THE ENDURANCE OF ALL PARTICIPANTS AND OFFERED A CHESS FEAST UNMATCHED IN REGIONAL COMPETITION, THREE DAYS OF NON-STOP TOURNAMENT CHESS. WHEN THE DUST CLEARED, BROWNE AND BRAIFORD WALKED AWAY WITH THE BIG MONEY. WITH EACH PLAYER SCORING 6.5 POINTS, THEY MANAGED TO SWEEP THE FIELD WITHOUT A FINAL CONFRONTATION. BRADFORD LOST A HALF POINT TO MASTER KEN SMITH, WHILE BROWNE DREW 1982 SWO WINNER AND SENIOR MASTER PAUL KURODA.

THE DEAN OF AMERICAN CHESS, GEORGE KOLTANOWSKI WAS ON HAND TO SHARE HIS CHESS EXPERIENCES AS WELL AS PERFORM HIS NATIONALLY ACCLAIMED KNIGHTS TOUR. KOLTY WAS HONORED BY CHESS SUPPORTER EXTRODINARE BILL CHURCH WHO PRESENTED KOLTY WITH A DECLARATION FROM THE OFFICE OF THE GOVENOR DECLARING HIM AN 'OFFICIAL CITIZEN OF TEXAS'. CHURCH ALSO PRESENTED KOLTY A PLAQUE FROM THE PLAYERS OF TEXAS THANKING HIM FOR HIS LIFELONG PROMOTION OF CHESS IN TEXAS.

REPORTED BY MIKE MOORE

Photo: Infinite Images Inc





50th Southwest Open
Winners



* GAMES FROM THE SW OPEN *

1st-2nd Walter Browne 6½
Joe Bradford

3rd-5th& Mitchell Goldberg 6
1st,2nd Igor Shtern
Expert Robert Epstein
William Gray
Mark Hulsey

3rd expert Michael Calogridis 5½
Ceasar Horta
Selby Anderson

1st A Rudy Pena 5½

2nd,3rd A Frank Adams 5
Gary Hewitt
Robert Barber
Art Riley
Kevin McDonald
Hector Lazcano

1st-3rd B Daryl Howard 4½
Bruce Greco
James Myers
William Stutsman
Gregory Walton
Greg Wren

1st C Terry Moeller 4½

2nd,3rd C James Murphy 4
Alexander Weinberg

1st D Frank Durham 4
Joe Torres

2nd,3rd D Richard Ciriello 3½
Robert Orsak
Marcus Roberts

1st-3rd E S. Mandujano 2
Paul Alexander
Michael McLeskey

1st UNR Teofilo Garza 4½

2nd UNR Tim Richardson 3½

3rd UNR Jarvis Brown 3
L.H.McCormack
Lloyd Willis

KEN SMITH vs GARY SIMS
1 P-QB4 N-KB3 2 P-KN3 P-K4
3 B-N2 P-Q3 4 N-QB3 P-B3
5 P-K4 B-K2 6 P-Q3 O-O
7 KN-K2 N-K1 8 O-O P-KB4
9 P-KB4 BPXP 10 QPXP B-N5
11 P-KR3 BxN 12 QxB PXP
13 PXP B-B3 14 B-K3 N-Q2
15 QR-Q1 Q-B2 16 B-B3
P-QN3 17 Q-N2!(a) QR-Q1
18 P-K5 PXP 19 BxBP K-R1
(b) 20 BxN RxB 21 RxR QxR
22 PXP B-K2 (c) 23 RxR+
BxR 24 Q-B3 K-N1 25 Q-Q5+
Q-B2 26 K-N2 N-B2 27 QxQ
KxQ 28 K-B3 N-K3 29 N-K4
R-KR3 30 N-Q6+ BxN
31 PxB N-B4 32 BxN PxB
33 K-K4 K-K3 34 P-Q7 KxP
35 K-Q5 P-N4 36 KxP P-KR4
37 K-Q4 P-QR4 38 P-N3 P-N5
39 PXP PXP 40 P-R3 P-N6
41 K-K3 K-K3 42 P-N4 P-N7
43 K-B2 RESIGNS
Annotated by Jack Ligon
a) Eyeing the weak pawn
at c6
b) This loses a pawn, but
Black's position was
already difficult
c) Black is forced to
enter the ending a pawn
down. Note the fine
technique displayed by
Smith in notching the
victory.



GARY SIMMS (2283) vs JOE GILBERT (1904)

1. P-K4 P-K4 2. N-KB3 N-QB3 3. P-QB3 P-Q4 4. Q-R4 PxP 5. NxP B-Q2
6. NxB QxN 7. QxKP+ B-K2 8. P-Q4 O-O-O 9. B-Q3 N-B3 10. Q-B5 P-KN3
11. QxQ+ RxQ 12. O-O N-K4 13. PxN RxB 14. PxN RESIGNS

MICHAEL CALOGRIDIS (2274) vs ROBERT CHALKER (2074)

1. d4 d5 2. Nf3 Nc6 3. g3 Bg4 4. Bg2 Nf6 5. O-O Bxf3 6. Bxf3 e5
7. dxe5 Nxe5 8. Bg2 c6 9. Nd2 Bd6 10. e4 dxe4 11. Nxe4 Nxe4 12. Bxe4
Qc7 13. Be3 h5 14. Qe2 O-O-O 15. Bxa7 b6 16. Qa6+ Qb7 17. Qb6 RESIGNS

STUART GOURD (1631) vs GEORGE CHURCH JR (1907)

1. e4 e5 2. f4 ef 3. Nf3 d6 4. Bc4 h6 5. d4 g5 6. Nc3 Bg7 7. O-O
Bg4 8. Re1 Ne7 9. Qd3 Nc6 10. Bb5 O-O 11. h4 a6 12. Ec4 Ng6 13. hg
Bf3 14. gh Bd4+ 15. Kf1 Bg2+ 16. Ke2 Ne5 17. Qd2 Bf3 18. Kf1 Qh4
19. RESIGNS

KENNETH GARDNER (2152) vs DON MARCOTT (2182)

1. e4 c5 2. Nf3 Nc6 3. d4 cd 4. Nd4 g6 5. Nc3 Bg7 6. Be3 Nf6 7. Nc6
bc 8. e5 Ng8 9. Bf4 Qa5 10. Qd4 Nh6 11. Bh6 Bh6 12. e6 O-O 13. ed Bd7
14. Qd7 Rfd8 15. Qh3 Bd2+ 16. Ke2 Qe5+ 17. Kf3 Bc3 18. bc Rd6
19. Qh4 Rf6+ 20. RESIGNS

BOB EPSTEIN (2164) vs JACK KELLER (1927)

1. e4 c5 2. Nf3 e6 3. d4 cxd4 4. Nxd4 a6 5. g3 b5 6. Bg2 Bb7 7. O-O
Qc7 8. Re1 d6 9. Nc3 Nf6 10. Bg5 Be7 11. a4 b4 12. Bxf6 gxf6 13. Na2
Qb6 14. a5 Qxa5 15. Qd2 Nd7 16. Nxb4 Qb6 17. c3 h5 18. Qe3 a5
19. Nd5 Bxd5 20. exd5 e5 21. b4 Nf8 22. Bf1 Ng6 23. Bb5+ Kf8
24. Ne6+ RESIGNS

JOHN DUNNING (2321) vs KEITH MEHL (2140)

T=Time Used

1. d4 Nf6 2. c4 e6 3. Nc3 d5 4. cxd5 exd5 5. Bg5 Be7 (T 0-1)
6. Qc2 O-O 7. e3 c6 8. Bd3 Nbd7 9. Nf3 h6 10. h4 Re8 (T 4-9)
11. O-O-O Ne4 12. Bf4 Nxc3 13. Qxc3 c5 14. dxc5 Nxc5 15. Bc2 Qb6 (T30-35)
16. Be5 Bf8 17. Bd4 a5 18. Ne5 Qb4 19. Qxb4 axb4 20. Bxc5 Rxe5 (T 60-46)
21. Bd4 Re8 22. Bb3 Be6 23. Kd2 Be7 24. g4 g6 25. Rdg1 Bf8 (T 68-61)
26. f3 Bg7 27. Rgc1 Bd7 28. Bxg7 Kxg7 29. Kd3 Bb5+ 30. Kd4 Be2 (T 81-79)
31. Bxd5 Rad8 32. Rh3 Re7 33. e4 f5 34. gxf5 gxf5 35. Rg1+ Kh7 (T92-106)
36. Rhg3 fxe4 37. fxe4 Bb5 38. Kc5 Bc6 39. Rg8 Rxc8 40. Bxc8+
Kh8 (T 101-110) 41. Bd5 b3 42. axb3 Bxd5 43. exd5 b6+ 44. Kxb6 RESIGNS

PAUL KURODA (2376) vs WALTER BROWNE (2630)

1. Nf3 c5 2. c4 Nf6 3. Nc3 e6 4. g3 b6 5. Bg2 Bb7 6. O-O Be7
7. b3 O-O 8. Bb2 d5 9. cd5 Nd5 10. Nd5 Bd5 11. d4 Nd7 12. dc5 Nc5
13. Rc1 Rc8 14. Rc2 Bf6 15. Qa1 Bb2 16. Qb2 Qe7 17. Rfc1 Qb7
18. Ne1 f6 19. Bd5 Qd5 20. Ng2 Qd7 DRAW

DON MARCOTT (2182) vs BOB EPSTEIN (2164)

1. d4 Nf6 2. g4 e6 3. Nc3 Bb4 4. Qb3 c5 5. dxc5 Qa5 6. Bd2 Nc6 7. Nf3
Qxc5 8. a3 Bxc3 9. Bxc3 Ne4 10. e3 O-O 11. Bd3 Nxc3 12. Qxc3 a5
13. O-O d5 14. Rac1 dxc4 15. Qxc4 Qxc4 16. Bxg4 Bd7 17. Rfd1 Rfd8
18. Bb5 Kf8 19. Kf1 Ke7 20. Ke2 f6 21. Kd2 e5 22. Rcd1 Bf4 23. h3
Bxf3+ 24. Kxf3 f5 25. Rd5 Nd5+ 26. R5xd4 exd4 27. exd4 Rac8 28. Re1+
Kf6 29. RESIGNS

FREE CHESS SETS FOR THE ASKING

FREE INSTRUCTION MATERIALS, CLOCKS, SETS AND BOARDS ARE AVAILABLE TO YOUR CLUB FOR TEACHING CHESS TO SCHOOL KIDS REPORTS GEORGE KOLTANOWSKI (KOLTY), THE DEAN OF AMERICAN CHESS. KOLTY HAS RAISED \$25,000 TOWARDS HELPING JUNIOR CHESS. THIS MONEY IS ADMINISTERED BY THE USCF JR TRUST FUND. THIS TRUST FUND WILL SUPPLY SCHOOLS WITH THE ABOVE ITEMS WHEN THESE PROCEDURES ARE USED IN REQUESTING THEM.

1. OBTAIN A LETTER FROM THE SUPERINTENDENT OR PRINCIPAL OF YOUR SCHOOL REQUESTING THE MATERIALS FOR INSTRUCTION IN SCHOOL.
2. SEND THIS LETTER TO THE TCA SCHOOL COORDINATOR, C/O PAT LONG, PO BOX 2307, AUSTIN, TEXAS 78768

THE TCA COORDINATOR WILL CONTACT THE USCF JR TRUST FUND AND REQUEST THE MATERIALS FOR YOUR SCHOOL. IT'S EASY! READ THE NEXT ISSUE OF TEXAS KNIGHTS TO FIND OUT HOW TO SELL YOUR SCHOOL ON THE IDEA.

ADVERTISING RATES SET

NEW ADVERTISING RATES WERE SET AT THE TCA DELEGATES MEETING IN SAN ANTONIO LABOR DAY WEEKEND. THE RATES ARE NOW \$25 FOR A WHOLE PAGE, \$12.50 FOR A HALF PAGE AND \$6.25 FOR A QUARTER PAGE. ADVERTISE YOUR TOURNAMENTS YOUR CLUB MEETINGS OR ALMOST ANYTHING ELSE! WE'LL EVEN DO THE LAYOUT FOR FREE. SEND YOUR AD TO THE EDITOR AND YOUR PAYMENT TO THE TREASURER.

TCA ANNOUNCES NEW DUES STRUCTURE

A NEW DUES STRUCTURE PASSED DURING THIS YEARS ANNUAL BUSINESS MEETING IN SAN ANTONIO DURING THE LABOR DAY WEEKEND. THE NEW DUES ARE AS FOLLOWS:

- REGULAR.....\$8
- STUDENT W/ID....\$5
- JUNIOR.....\$4
- TCA PATRON.....\$25

A PROVISION WAS ALSO PASSED SO YOUR CLUB CAN BENEFIT FROM SIGNING UP REGULAR MEMBERS TO THE TCA. REGULAR DUES ARE \$8 PER YEAR, HOWEVER IF YOUR USCF AFFILIATED CLUB SIGNS UP MEMBERS FOR THE TCA THE CLUB WILL KEEP \$1 OF EACH REGULAR MEMBERSHIP DUES FOWARDED TO LEE GASKILL, 109 E. 23D STREET, HOUSTON, TX 77008. SEND SEVERAL AT ONCE AND SAVE POSTAGE. DON'T FORGET THE USCF AFFILIATE NUMBER!

DEADLINE ANNOUNCED

DECEMBER 7, PEARL HARBOR DAY, WILL BE THE LAST DAY FOR SUBMISSION OF MATERIALS FOR THE NEXT ISSUE OF TEXAS KNIGHTS. THIS EDITOR NEEDS YOUR GAMES, CLUB REPORTS, CROSSTABLES AND LETTERS. LET'S MAKE TEXAS KNIGHTS SPEAK OF TEXANS!!

ORGANIZER HONORED

ANGIE GARDNER OF THE GREATER FT WORTH CHESS CLUB RECIEVED AN AWARD AT THE ANNUAL BUSINESS MEETING IN SAN ANTONIO LABOR DAY WEEKEND AS THE (TEXAS ORGANIZER OF THE YEAR). ANGIE WAS INSTRUMENTAL IN ORGANIZING THE 1984 US OPEN HELD IN FT WORTH IN AUGUST.



CHRISTMAS GIFT MEMBERSHIP



IF YOU LIKED THIS ISSUE WHY NOT SEND A YEARS MEMBERSHIP IN THE TCA TO A FRIEND AS A CHRISTMAS GIFT!

IF YOU DIDN'T ENJOY THIS ISSUE WHY NOT SEND A YEARS MEMBERSHIP IN THE TCA TO THAT PATZER THAT CHOMPED YOUR EN PRIX QUEEN WITH HIS KNIGHT LAST WEEK!!

SEND THE PERTINANT INFOR AND \$8 TO LORENZO GASKILL 109 EAST 23D STREET, HOUSTON, TEXAS 77008 BY THANKSGIVING TO INSURE DELIVERY BY CHRISTMAS.

CHRISTMAS GIFT MEMBERSHIP

FROM: _____

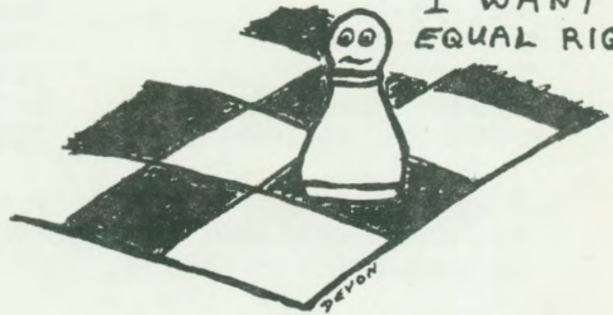
TO: _____

ZIP _____

MEMBERSHIP THE EASY WAY

Just fill out the form below to obtain a new membership or to renew your membership and mail it with the dues to Lee Gaskill, 109 E. 23d St, Houston, Texas 77008

OK! OK! I'LL BE A QUEEN, BUT I WANT EQUAL RIGHTS!



TEXAS CHESS ASSOCIATION MEMBERSHIP FORM

NAME: _____

ADDRESS: () Correct on Mailing Label

() _____



MEMBERSHIP STATUS: () RENEWAL () NEW

TYPE: () Regular \$ 8.00 per year () PATRON \$25.00 per year () Junior \$ 4.00 per year () Student \$ 5.00 per year with ID

Make checks payable to TEXAS CHESS ASSOCIATION.

Send to Texas Chess Association Lee Gaskill Sec/Tres. 109 E.23rd Houston 77008

TOURNAMENT CALENDAR: Organizers, please notify Robert C. Green, Box 278, Moran, Texas 76464, if any information on this list is incomplete or incorrect. Also, please send him your club's schedule as early as possible so he may notify you of possible conflicting dates. Full details of these events may also appear in "Chess Life". Please note that this list also includes one day events.

November 3	Texas A&M University (Djuric)
November 10-11	San Angelo
November 17-18	Wichita Falls; Houston Chess Studio
*NOVEMBER 23-25	TEXAS OPEN CHAMPIONSHIP - DALLAS
December 1-2	San Antonio
December 8	Abilene
December 8-9	Austin (ACE)
December 15-16	Houston Chess Studio

1985 SCHEDULES

January 5-6	Orange
January 19-20	Houston Chess Studio
February 2-3	Orange
February 23-24	Houston (Brookhollow)
March 2-3	Orange
March 16-17	Houston Chess Studio
April 6-7	Orange
April 13-14	Houston Chess Studio
*APRIL 20-21	TEXAS JUNIOR CHAMPIONSHIP - ABILENE
*APRIL 20-21	TEXAS SENIOR CHAMPIONSHIP - ABILENE
*APRIL 20-21	Abilene
May 18-19	Houston Chess Studio
*MAY 25-27	TEXAS CHAMPIONSHIP - AUSTIN
*MAY 25-27	TEXAS AMATEUR - AUSTIN
*AUGUST 31-SEPTEMBER 2	SOUTHWEST OPEN - SAN ANTONIO
*NOVEMBER 29-DECEMBER 1	TEXAS OPEN CHAMPIONSHIP - DALLAS

* Means that membership in the Texas Chess Association is required of Texas residents and a state membership is required by non-Texas resident.

CAPITAL LETTERS means that the event is sponsored by the TCA.

TEXAS CHESS ASSOCIATION
P.O. Box 2307
Austin, Texas 78768

BULK RATE U.S. POSTAGE PAID PERMIT NO. 773 AUSTIN, TX. 78768

